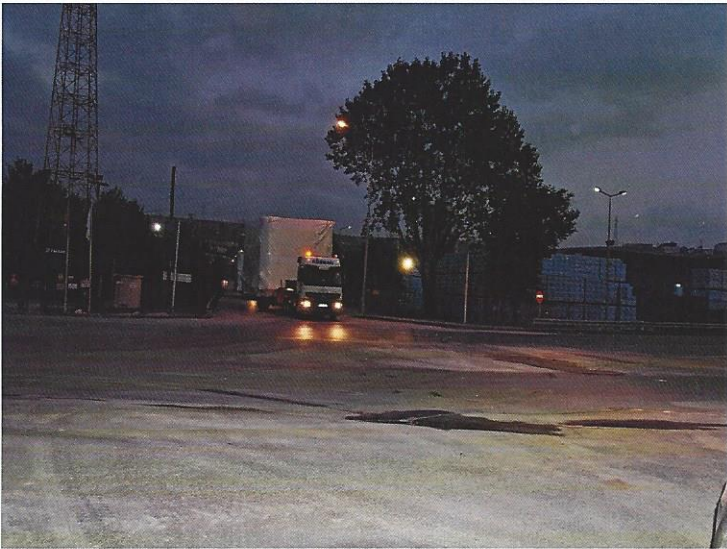


LARGEST COOLER & GRANULATOR SECTIONS OF TURKEY RECENTLY TRANSPORTED TO SAUDI ARABIA



WATERLEAU, world leader in engineering and pollution systems (FGT) based in Paris, France has selected TPL (Transport & Project Logistics), Antwerp. Together with his Turkish partner for the road transportation of Cooler& Granulator sections, total 9 units , each 17 meters long, 6 meters width and 7,5 m Height (54 tons) from Gebze factory to Efesan Port in Dilovası.

Pre- planning of transport, route and port survey took 2 months and transportation and loading of sections on chartered vessel was properly done without any delay.

9 sections were transported with modular axle system in the night and many telephone cables and power lines lifted viz removed with cooperation of local authority.

Due to renewal of access bridge to storage area of Port was closed by the civil construction company under Marmara Rail Project and therefore all units were transferred to storage area of Efesan terminal using a 600 TM mobile crane .

With urgency requirement by client for transport of Cooler & Granulator sections , loading at factory, transport to port , shifting to storage area and loading onto vessel was completed within 3 days without any delay.